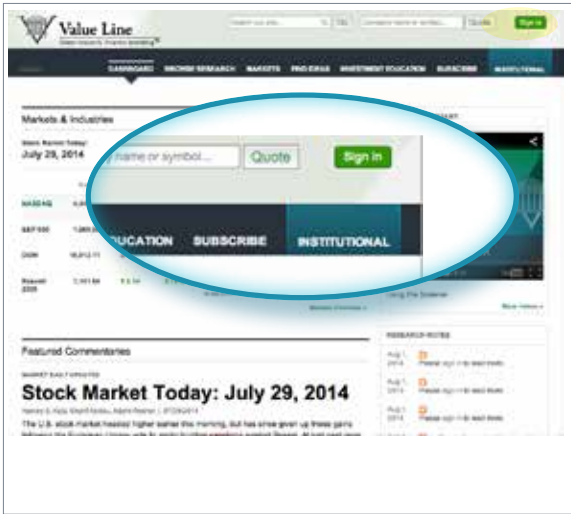


The Value Line Digital Platform CHARTING

1 SIGN IN

To access Value Line's various products, go to **valueline.com** or **valuelinepro.com** and sign in. Enter your Username and Password when prompted.

www.valueline.com

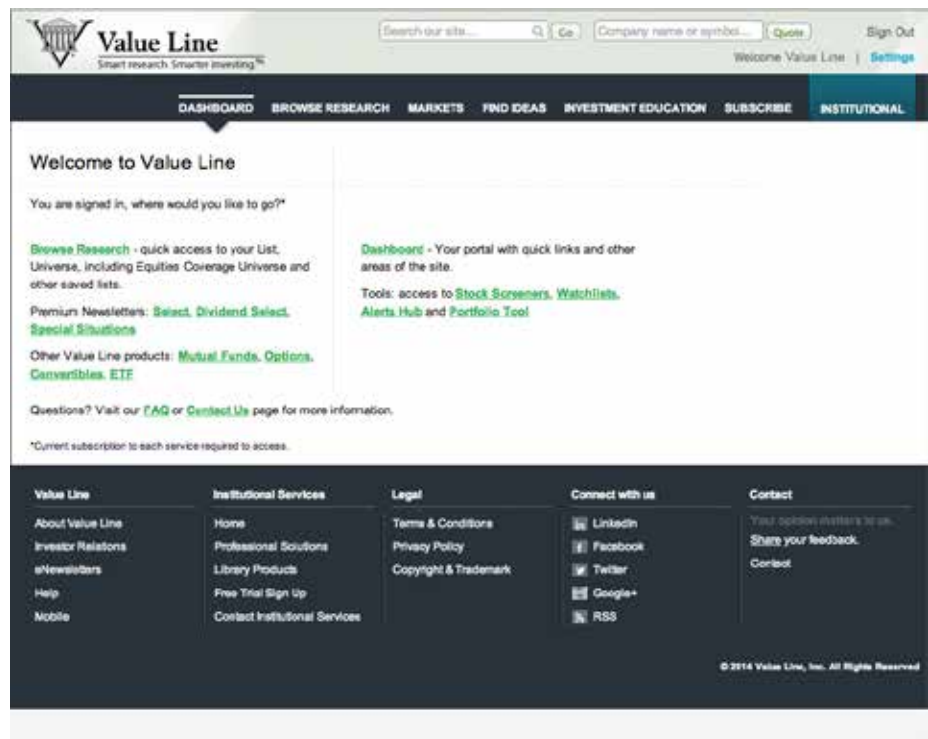


www.valuelinepro.com



After you sign in, you will arrive at the Welcome Page where you find the following links:

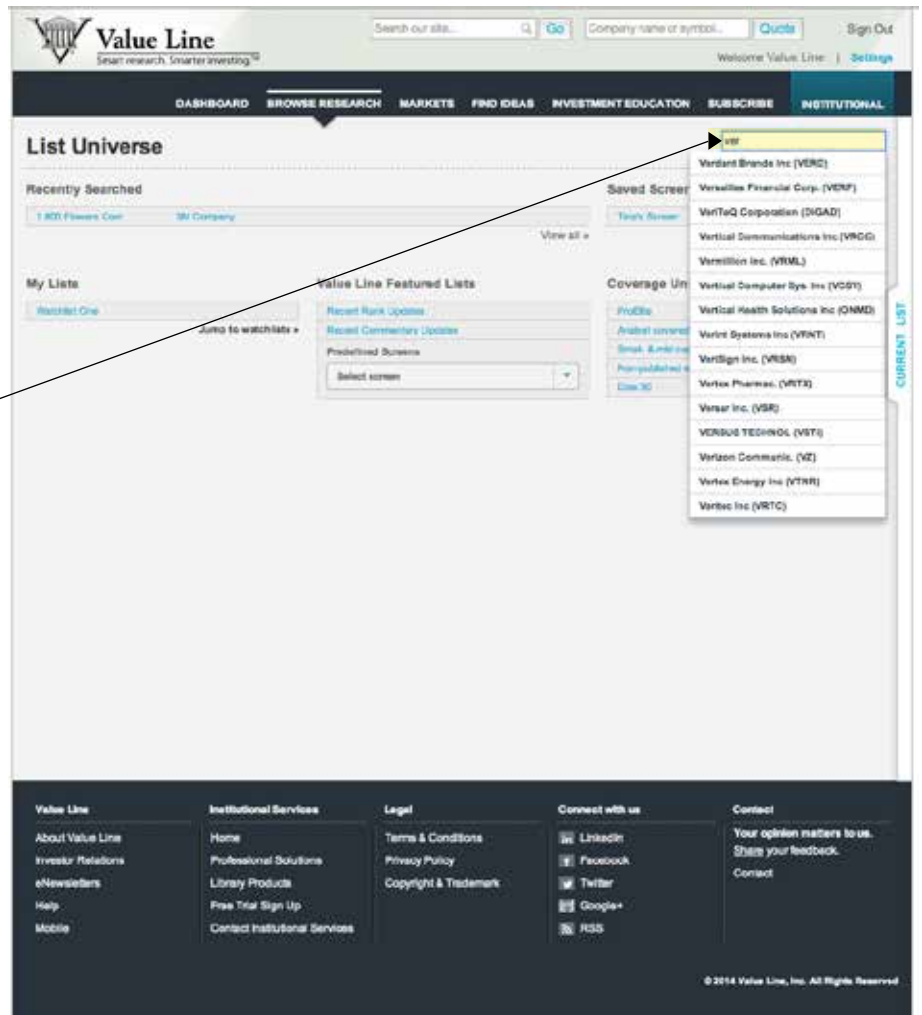
- Browse Research
- Select
- Dividend Select
- Special Situations
- Mutual Funds
- Options
- Convertibles
- ETF
- Dashboard
- Stock Screeners
- Watchlists
- Alerts Hub
- Portfolio Tool
- FAQ
- Contact Us



2 Access a report from BROWSE RESEARCH

Enter a company name or ticker symbol in the box that says "Company name or symbol" which is located on the upper right hand side of the page. Once the company appears, select the company or ticker symbol from the dropdown menu and the report will open.

Start typing a company name or ticker and then make your selection from the drop down list.



The Value Line Digital Platform CHARTING

3 Opening the Charting Module

To view the Charting module, open the Side Right Rail located at the right side of the Value Line report. Place your cursor on the Side Right Rail. Do not click. A hidden menu will appear. Keep your cursor within the hidden menu. Then click "Charting" so it appears in the report. Scroll down to the bottom of the report to view the Charting module.

Choose "Charting" from the "Side Right Rail."

The screenshot shows the Value Line website interface for Verizon Communications (NYSE:VZ). At the top, there's a search bar and navigation tabs like 'DASHBOARD', 'BROWSE RESEARCH', 'MARKETS', 'FIND IDEAS', 'INVESTMENT EDUCATION', 'SUBSCRIBE', and 'INSTITUTIONAL'. Below this, the company name 'Verizon Communic. NYSE:VZ' is displayed with an 'ADD TO WATCHLIST' button. Key financial data is shown: Last Price \$51.97, Day Change \$0.39 (+0.76%), Trading P/E 16.50, Market P/E 0.97, Dividend Yield 4.13%, Target Price Range \$70.00 - \$5.00, Total Return 11, Safety 11, and Financial Strength A++ I. A 'Side Right Rail' menu is visible on the right side of the report, with an arrow pointing to the 'Charting' option.

To expand and open the Charting module click on the upper right arrow.

This screenshot shows the 'Charting' module expanded in the Value Line report. On the left, there's a 'VALUE LINE PDF REPORTS' section with a search bar and a list of latest reports. On the right, the 'CHARTING' section is active, showing a line chart for Verizon's stock price from July 2014. The chart includes a 'Show data' button and a 'Hide' dropdown menu. Below the chart, there's a '3-5 YEAR PROJECTIONS' section.

4 Create your Custom Chart

After the Charting module is open, you can add indicators, access tools, add comparisons and show saved settings.



5 Save your Custom Chart

When you are ready to save your chart, click "Save Settings" on the right side of the screen, and enter a name for your chart in the pop-up form. Then click "Save".

To recall your saved settings, click "Show Saved Settings" and choose your saved item from the drop down menu.

Click "Start Over," in the right top side of the screen to view a clean template.

