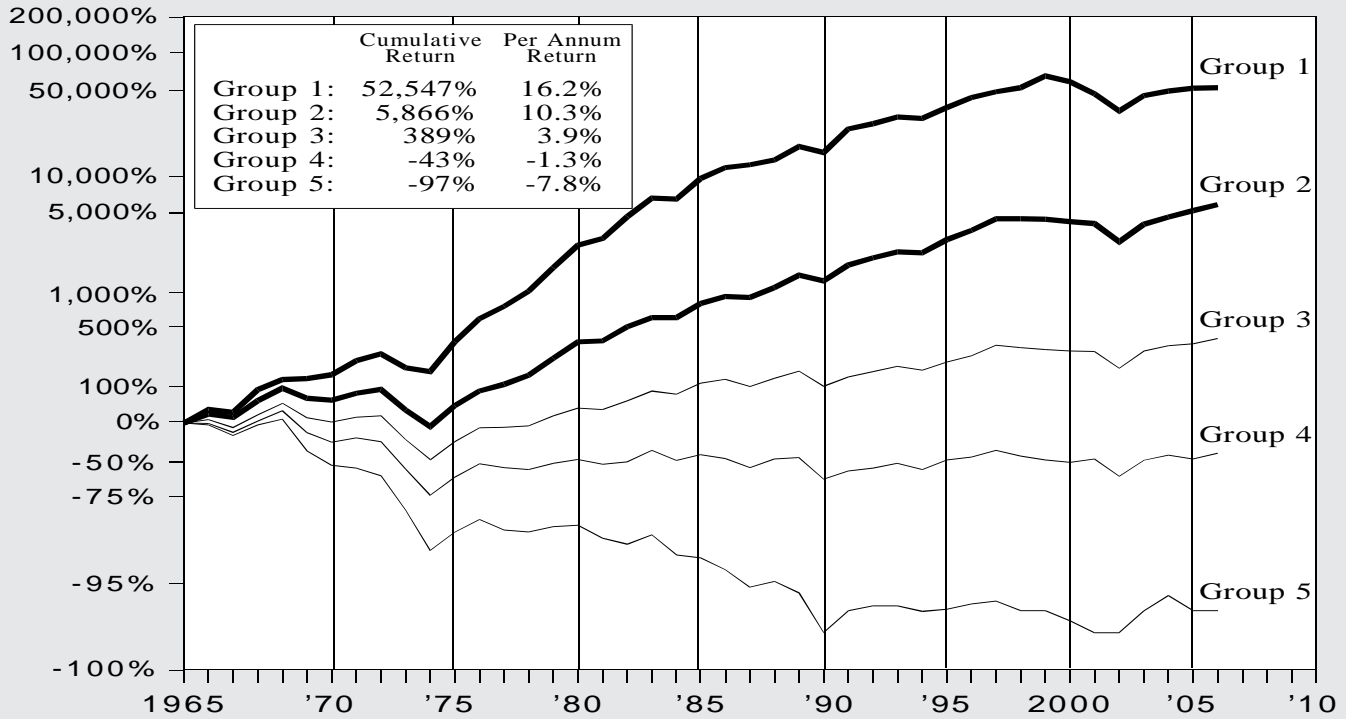


Record of Value Line Ranks for Timeliness Allowing for Changes in Rank Each Week (1965 - 2006)



RECORD OF VALUE LINE RANKINGS FOR TIMELINESS (ALLOWING FOR CHANGES IN RANK EACH WEEK)[†]

April 16, 1965 to December 29, 2006

Group	'65*	'66	'67	'68	'69	'70	'71	'72	'73	'74	'75	'76	'77	'78	'79	'80	'81	'82	'83	'84	'85	'86
1	28.8%	-5.5%	53.4%	37.1%	-10.4%	7.3%	30.6%	12.6%	-19.1%	-11.1%	75.6%	54.0%	26.6%	32.6%	54.7%	52.6%	13.6%	50.6%	40.9%	-2.1%	47.0%	22.9
2	18.5	-6.2	36.1	26.9	-17.5	-3.2	13.7	7.4	-28.9	-29.5	47.4	31.2	13.4	18.3	38.0	35.7	1.8	31.0	19.1	-0.8	30.7	14.4
3	6.7	-13.9	27.1	24.0	-23.8	-8.0	9.3	3.5	-33.6	-34.1	40.7	29.0	1.3	3.0	20.7	15.4	-3.3	17.9	20.2	-5.6	22.8	7.7
4	-0.4	-15.7	23.8	20.9	-33.3	-16.3	8.4	-7.1	-37.9	-40.6	39.3	28.8	-6.9	-3.8	12.8	7.4	-8.7	5.1	25.0	-17.4	11.4	-6.8
5	-3.2	-18.2	21.5	11.8	-44.9	-23.3	-5.5	-13.4	-43.8	-55.7	40.9	26.7	-17.6	-3.2	10.4	2.9	-21.4	-10.9	19.0	-31.0	-5.6	-19.6

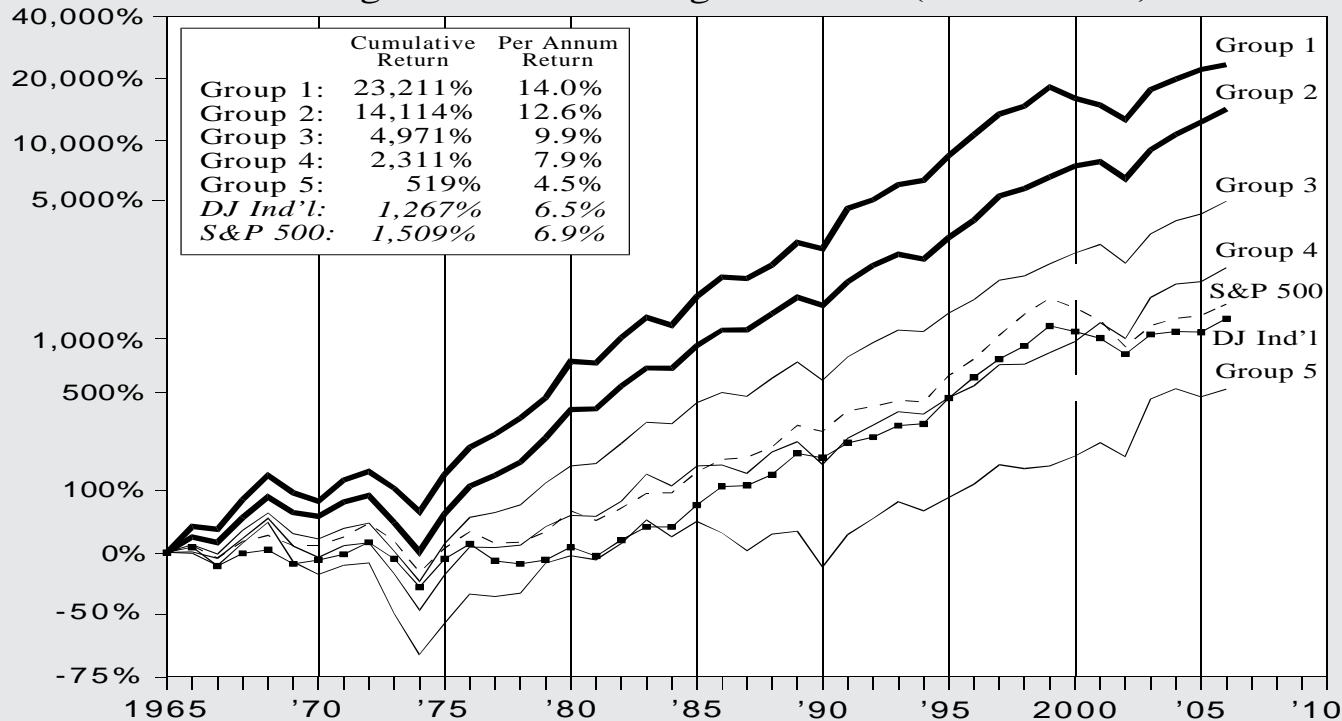
Group	'87	'88	'89	'90	'91	'92	'93	'94	'95	'96	'97	'98	'99	'00	'01	'02	'03	'04	'05	'06	'65* to 2006
1	5.4%	9.5%	27.9%	-10.4%	55.4%	10.0%	13.4%	-2.6%	22.8%	20.4%	11.3%	8.2%	24.1%	-10.4%	-20.3%	-27.2%	33.8%	8.4%	5.6%	0.7%	52,547%
2	-2.4	20.4	26.5	-10.2	34.1	14.3	12.4	-2.2	28.1	19.0	24.0	0.1	-0.5	-4.4	-3.8	-28.8	38.2	14.5	12.9	12.1	5,866
3	-12.6	16.1	13.7	-24.4	18.9	11.0	9.8	-6.9	16.6	12.3	21.5	-3.9	-3.3	-3.2	-0.8	-27.1	38.2	10.5	3.6	11.3	389
4	-15.8	17.6	2.6	-33.7	16.7	6.2	8.5	-9.9	17.1	7.1	14.5	-11.0	-7.5	-3.7	5.9	-26.7	34.2	9.4	-6.7	11.8	-43
5	-28.0	11.4	-19.2	-45.5	25.5	15.4	0.3	-15.2	5.2	7.5	16.6	-11.5	-1.3	-19.7	-7.2	-15.7	52.2	15.2	-12.6	7.8	-97

* April through December

† Geometric Averaging

Record of Value Line Ranks for Timeliness

Allowing for Annual Changes in Rank (1965 - 2006)



RECORD OF VALUE LINE RANKINGS FOR TIMELINESS (WITHOUT ALLOWING FOR CHANGES IN RANK EACH WEEK)[†]

April 16, 1965 to December 29, 2006

Group	'65*	'66	'67	'68	'69	'70	'71	'72	'73	'74	'75	'76	'77	'78	'79	'80	'81	'82	'83	'84	'85	'86
1	33.6%	-3.1%	39.2%	31.2%	-17.7%	-8.9%	26.5%	10.1%	-17.1%	-23.1%	51.6%	35.3%	15.8%	19.8%	25.6%	50.2%	-1.9%	33.7%	25.2%	-8.6%	38.6%	23.5%
2	18.9	-6.0	31.9	26.3	-16.3	-4.0	17.4	7.5	-26.2	-27.8	53.0	36.3	12.7	16.1	30.8	37.4	0.7	29.0	22.2	-0.1	29.5	18.7
3	8.9	-9.7	30.1	21.4	-20.7	-5.5	12.2	6.2	-27.0	-28.5	52.9	33.8	5.2	9.2	27.6	20.8	2.7	25.5	26.7	-1.6	26.6	11.5
4	0.8	-7.2	25.1	25.1	-26.8	-11.7	14.2	3.2	-29.1	-33.6	48.4	36.1	-0.2	2.4	23.1	13.2	-0.9	18.1	35.2	-12.3	24.6	1.5
5	-1.2	-12.4	28.4	25.9	-35.7	-13.1	10.5	2.9	-43.1	-36.8	42.1	38.2	-2.8	4.0	39.9	8.4	-4.2	19.9	30.0	-17.1	18.7	-12.1
Avg.	10.1	-7.9	29.9	24.6	-22.1	-7.5	14.9	5.5	-27.7	-29.6	51.2	35.1	5.8	9.6	28.0	23.4	0.9	25.0	27.5	-4.7	27.0	10.2

Group	'86	'87	'88	'89	'90	'91	'92	'93	'94	'95	'96	'97	'98	'99	'00	'01	'02	'03	'04	'05	'06	'65* to 2006
1	23.5%	-1.2%	16.0%	28.7%	-6.6%	56.7%	10.1%	18.5%	4.6%	31.3%	27.0%	25.8%	9.3%	23.7%	-11.7%	-7.4%	-15.0%	40.1%	12.2%	11.3	5.7%	23,211%
2	18.7	0.4	19.7	20.3	-8.7	29.8	19.9	13.6	-5.3	27.1	21.4	31.3	8.5	13.9	13.2	4.8	-17.3	37.9	18.8	15.0	15.6	14,114
3	11.5	-4.1	23.2	19.6	-18.6	30.0	17.5	15.3	-1.6	22.8	16.1	24.1	4.8	14.5	13.0	10.2	-18.8	38.6	15.8	7.8	15.2	4,971
4	1.5	-9.1	27.2	12.4	-22.8	34.1	15.6	16.5	-2.9	20.2	14.3	26.6	0.6	13.5	14.0	23.3	-16.2	58.2	16.5	2.4	16.7	2,311
5	-12.1	-17.9	20.0	3.3	-33.0	43.8	19.9	20.3	-9.3	15.7	15.8	24.4	-4.0	2.8	11.6	16.4	-14.5	90.1	12.3	-8.7	9.1	519
Avg.	10.2	-4.9	22.6	17.8	-17.6	33.4	17.3	15.7	-2.6	23.2	17.4	26.1	4.4	14.0	11.4	11.0	-17.5	45.4	16.0	7.3	14.6	5,267

* April through December

† Arithmetic Averaging

Dow Jones Industrials

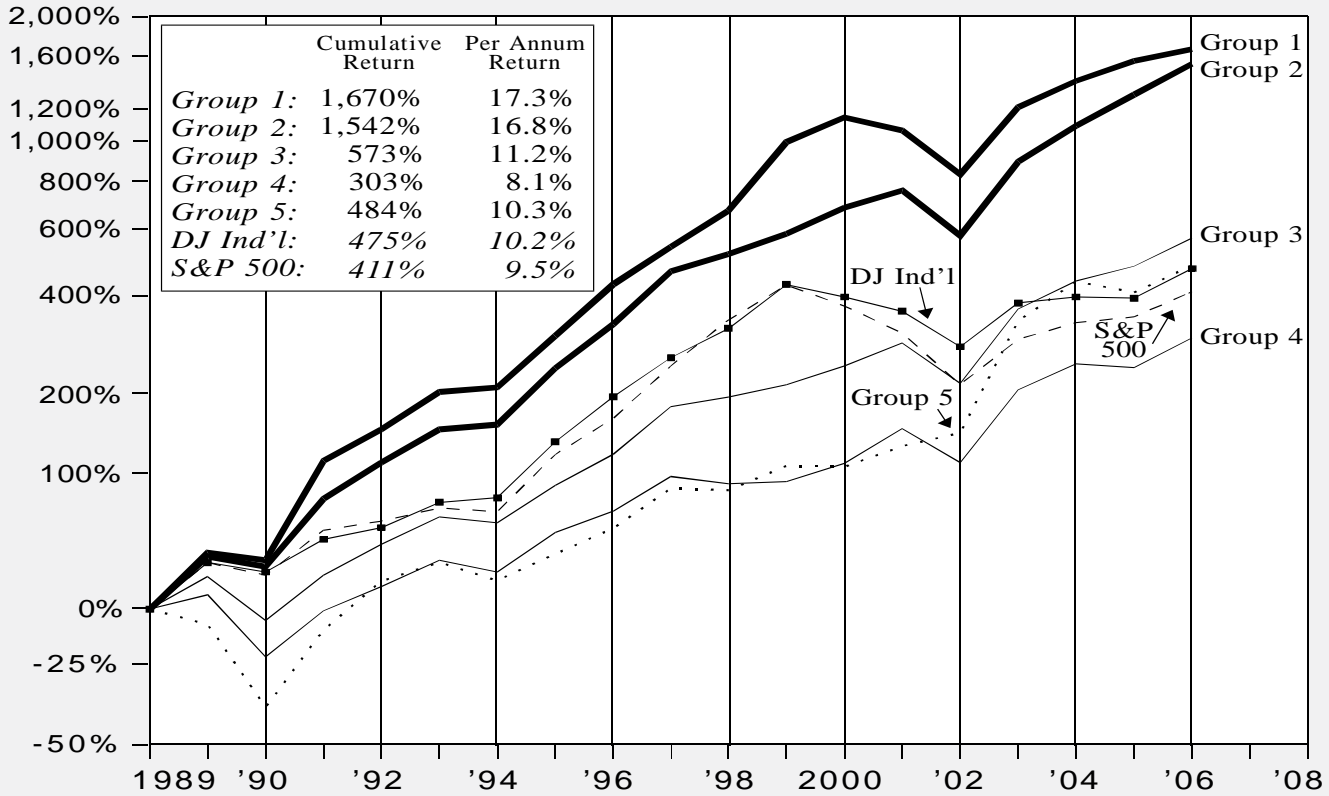
S&P 500

1,267%

1,509%

Record of Value Line Ranks for Timeliness

Allowing for Changes in Rank Each Week (1989 - 2006)



RECORD OF VALUE LINE RANKINGS FOR TIMELINESS (ALLOWING FOR CHANGES IN RANK EACH WEEK)[†]

December 31, 1988 to December 29, 2006

Group	'89	'90	'91	'92	'93	'94	'95	'96	'97	'98	'99	'00	'01	'02	'03	'04	'05	'06	'89 to '06
1	33.5%	-3.8%	66.7%	17.4%	21.2%	2.3%	30.5%	30.4%	21.1%	20.5%	42.1%	13.5%	-6.5%	-20.2%	41.3%	14.3%	10.9%	6.1%	1,670%
2	31.1	-5.2	41.7	20.3	18.6	2.5	34.1	25.1	31.3	9.2	11.0	14.3	9.1	-20.6	46.3	19.9	17.5	17.1	1,542
3	18.2	-20.2	26.1	17.3	15.1	-3.1	21.2	17.4	27.6	5.0	6.6	10.2	12.7	-18.9	46.8	15.4	7.7	15.7	573
4	7.6	-27.2	26.6	13.2	14.5	-5.9	22.5	11.7	19.3	-3.7	1.2	9.7	19.6	-16.0	45.1	14.7	-2.0	16.4	303
5	-7.5	-34.6	48.6	28.5	10.0	-8.9	14.7	14.0	22.9	-1.1	13.3	-0.4	11.1	+7.0	78.3	23.4	-5.5	14.8	484
DJIA	27.0	-4.3	20.3	4.2	13.7	2.1	33.5	26.0	22.6	16.1	25.2	-6.2	-7.1	-16.8	25.3	3.1	-0.6	16.3	475%
S&P 500	27.3	-6.6	26.3	4.5	7.1	-1.5	34.1	20.3	31.0	26.7	19.5	-10.1	-13.0	-23.4	26.4	9.0	3.0	13.6	411%

[†] Arithmetic Averaging